



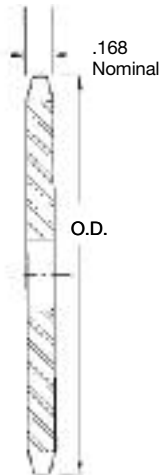
Single-Type B — Steel

Single-Type A

No. Teeth	Catalog Number	Outside Diameter	Type	Bore (inches)		Hub (inches)		Weight Lbs. (Approx.)	Type	Catalog Number	Stock Bore	Weight Lbs. (Approx.)
				Stock	Rec. Max.	Diameter	Length Thru					
8	35B8	1.130	B	3/8	3/8	3/4*	3/4	.07				
9	35B9	1.260	B	3/8	3/8	7/8*	3/4	.09				
10	35B10	1.380	B	3/8	3/8	1 1/8*	3/4	.14				
11	35B11	1.500	B	3/8	3/8	1 1/4*	3/4	.17				
12	35B12	1.630	B	1/2	3/8	1 1/2*	3/4	.20				
13	35B13	1.750	B	1/2	1/2	1 3/4*	3/4	.23				
14	35B14	1.870	B	1/2	3/8	1 3/4	3/4	.25				
15	35B15	1.990	B	1/2	3/8	1 1/2	3/4	.29	A	35A15	1/2	.10
16	35B16	2.110	B	1/2	3/8	1 5/8	3/4	.35	A	35A16	1/2	.12
17	35B17	2.230	B	1/2	1/2	1 7/8	3/4	.42	A	35A17	1/2	.12
18	35B18	2.350	B	1/2	1/2	1 3/4	3/4	.48	A	35A18	1/2	.14
19	35B19	2.470	B	1/2	1/2	1 1/2	3/4	.54	A	35A19	1/2	.16
20	35B20	2.590	B	1/2	1/2	1 5/8	3/4	.59	A	35A20	1/2	.20
21	35B21	2.710	B	1/2	1/2	2	3/4	.80	A	35A21	1/2	.20
22	35B22	2.830	B	1/2	1/2	2	3/4	.80	A	35A22	1/2	.22
23	35B23	2.950	B	1/2	1/2	2	3/4	.82	A	35A23	1/2	.24
24	35B24	3.070	B	1/2	1/2	2	3/4	.88	A	35A24	1/2	.26
25	35B25	3.190	B	1/2	1/2	2	3/4	.88	A	35A25	1/2	.28
26	35B26	3.310	B	1/2	1/2	2	3/4	.90	A	35A26	1/2	.28
27	35B27	3.430	B	1/2	1/2	2	3/4	.94	A	35A27	1/2	.34
28	35B28	3.550	B	1/2	1/2	2	3/4	.94	A	35A28	1/2	.34
30	35B30	3.790	B	1/2	1/2	2	3/4	1.02	A	35A30	1/2	.46
32	35B32	4.030	B	1/2	1/2	2	3/4	1.24	A	35A32	3/8	.46
35	35B35	4.390	B	3/4	1/2	2 1/4	3/4	1.50	A	35A35	3/8	.60
36	35B36	4.510	B	3/4	1/2	2 1/4	3/4	1.56	A	35A36	3/8	.62
40	35B40	4.990	B	3/4	1/2	2 1/4	1	1.62	A	35A40	1/2	.70
42	35B42	5.230	B	3/4	1/2	2 1/4	1	1.68	A	35A42	1/2	.78
45	35B45	5.590	B	3/4	1/2	2 1/4	1	1.78	A	35A45	1/2	.88
48	35B48	5.950	B	3/4	1/2	2 1/4	1	1.88	A	35A48	1/2	1.21
54	35B54	6.660	B	3/4	1/2	2 1/4	1	2.20	A	35A54	1/2	1.32
60	35B60	7.380	B	3/4	1/2	2 1/4	1	2.48	A	35A60	1/2	1.66
70	35B70	8.580	B	3/4	1/2	2 1/4	1	3.12	A	35A70	1/2	2.30
72	35B72	8.810	B	3/4	1/2	2 1/4	1	3.42	A	35A72	1/2	2.56
80	35B80	9.770	B	3/4	1/2	2 1/4	1	3.82	A	35A80	1/2	3.16
84	35B84	10.250	B	3/4	1/2	2 1/4	1	4.24	A	35A84	1/2	3.26
96	35B96	11.680	B	3/4	1/2	2 1/4	1	5.16	A	35A96	1/2	4.64
112	35B112	13.590	B	3/4	1/2	2 1/4	1	6.70	A	35A112	1/2	5.05

* Has recessed groove in hub for chain clearance.

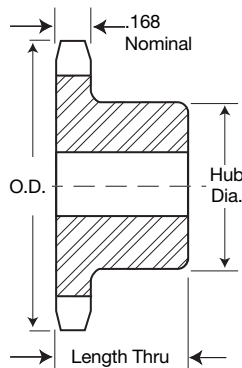
Maximum bores shown will accommodate standard keyseat and setscrew over keyseat. Slightly larger bores are possible with no keyseat, shallow keyseat, or setscrew at angle to keyseat.



TYPE A



TYPE A



TYPE B



TYPE B

Alteration Charges

See current discount sheet for alteration charges.