



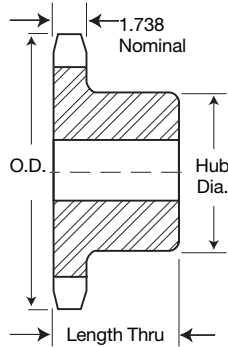
Single-Type B & C

Single-Type A

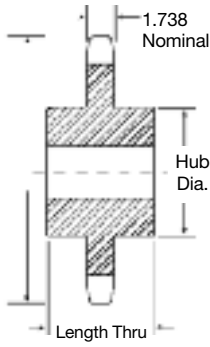
No. Teeth	Catalog Number	Outside Diameter	Type	Bore (inches)		Hub (inches)		Weight Lbs (Approx.)	Type	Catalog Number	Stock Bore	Weight Lbs. (Approx.)
				Stock	Rec. Max.	Dia.	Length Thru					
10	240B10	11.030	B	1½	4%	6½	3%	49	A	240A10	1½	30
11	240B11	12.020	B	1½	4%	7	3%	66	A	240A11	1½	37
12	240B12	13.000	B	1½	5%	7½	3%	72	A	240A12	1½	45
13	240B13	13.970	B	1½	5%	7½	3%	81	A	240A13	1½	54
14	240B14	14.940	B	1½	5%	7½	3%	88	A	240A14	1½	62
15	240B15	15.910	B	1½	5%	7½	3%	98	A	240A15	1½	68
16	240B16	16.880	B	1½	5%	8	4%	120	A	240A16	1½	82
17	240B17	17.850	B	1½	5%	8	4%	137	A	240A17	1½	93
18	240B18	18.810	B	1½	5%	8	4%	142	A	240A18	1½	108
19	240B19	19.780	B	1½	5%	8	4%	154	A	240A19	1½	120
20	240B20	20.740	B	1½	5%	8	4%	169	A	240A20	1½	128
21	240B21	21.710	B	1½	5%	8	4%	186	A	240A21	1½	148
25	240B25	25.550	B	1½	5%	8	4%	254	A	240A25	1½	208
30	240C30	30.340	C	1½	6	9	6%	398	A	240A30	1½	310
35	240C35	35.130	C	1½	6	9	6%	527	A	240A35	1½	416
40	240C40	39.920	C	1½	7	10	6%	672	A	240A40	1½	548
45	240C45	44.700	C	1½	7	10	6%	850	A	240A45	1½	702
54	240C54	53.310	C	1½	7	10	6%	1148	A	240A54	1½	1022
60	240C60	59.040	C	1½	7	10	6%	1419	A	240A60	1½	1268



TYPE A



TYPE B



TYPE C