



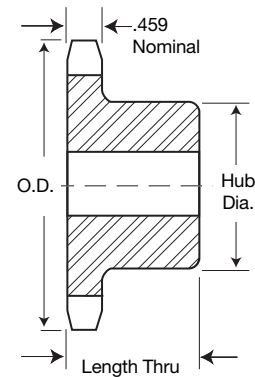
Single-Type B

Single-Type A

No. Teeth	Catalog Number	Outside Diameter	Type	Bore (inches)		Hub (inches)		Weight Lbs (Approx.)	Type	Catalog Number	Stock Bore	Weight Lbs. (Approx.)
				Stock	Rec. Max.	Diameter	Length Thru					
8	60B8	2.260	B	3/8	3/8	1 1/2*	1 1/4	.54				
9	60B9	2.510	B	3/8	7/8	1 1/2*	1 1/4	.64				
10	60B10	2.760	B	3/8	1 1/8	1 1/2*	1 1/4	.99	A	60A10	3/8	.44
11	60B11	3.000	B	3/8	1 1/8	2 1/2*	1 1/4	1.16	A	60A11	3/8	.54
12	60B12	3.250	B	3/8	1 1/2	2 3/8*	1 1/4	1.47	A	60A12	3/8	.68
13	60B13	3.490	B	3/8	1 1/2	2 1/2	1 1/4	1.66	A	60A13	3/8	.80
14	60B14	3.740	B	3/8	1 1/2	2 3/8	1 1/4	2.00	A	60A14	3/8	.94
15	60B15	3.980	B	3/8	1 1/2	2 3/8	1 1/4	2.51	A	60A15	3/8	1.08
16	60B16	4.220	B	3/8	2	3 1/8	1 1/4	2.81	A	60A16	3/8	1.24
17	60B17	4.460	B	3/8	2 1/4	3 3/8	1 1/4	3.22	A	60A17	3/8	1.44
18	60B18	4.700	B	3/8	2 3/8	3 3/8	1 1/4	3.72	A	60A18	3/8	1.62
19	60B19	4.950	B	3/8	2 3/8	3 3/8	1 1/4	3.92	A	60A19	3/8	1.84
20	60B20	5.190	B	3/8	2 3/8	3 3/8	1 1/4	4.63	A	60A20	3/8	2.12
21	60B21	5.430	B	3/8	2 3/8	4	1 1/4	5.00	A	60A21	3/8	2.28
22	60B22	5.670	B	3/8	2 3/8	4	1 1/4	5.25	A	60A22	3/8	2.48
23	60B23	5.910	B	3/8	2 3/8	4	1 1/4	5.48	A	60A23	3/8	2.68
24	60B24	6.150	B	3/8	2 3/8	4	1 1/4	5.78	A	60A24	2 3/8	3.00
25	60B25	6.390	B	3/8	2 3/8	4	1 1/4	6.13	A	60A25	2 3/8	3.34
26	60B26	6.630	B	3/8	2 3/8	4	1 1/4	6.38	A	60A26	2 3/8	3.54
27	60B27	6.870	B	3/8	2 3/8	4	1 1/4	6.72	A	60A27	2 3/8	3.96
28	60B28	7.110	B	3/8	2 3/8	4	1 1/4	6.88	A	60A28	2 3/8	4.14
29	60B29	7.350	B	3/8	2 3/8	4	1 1/4	7.28	A	60A29	2 3/8	4.40
30	60B30	7.590	B	3/8	2 3/8	4	1 1/4	7.58	A	60A30	2 3/8	4.78
31	60B31	7.830	B	3/8	2 3/8	4	1 1/4	7.72	A	60A31	2 3/8	5.24
32	60B32	8.070	B	3/8	2 3/8	4	1 1/4	8.26	A	60A32	2 3/8	5.52
33	60B33	8.300	B	1	2 3/8	4	1 1/4	8.42	A	60A33	1 1/8	5.86
34	60B34	8.540	B	1	2 3/8	4	1 1/4	8.80	A	60A34	1 1/8	6.16
35	60B35	8.780	B	1	2 3/8	4	1 1/4	9.04	A	60A35	1 1/8	6.78
36	60B36	9.020	B	1	2 3/8	4	1 1/4	9.60	A	60A36	1 1/8	6.82
37	60B37	9.260	B	1	2 3/8	4	1 1/4	10.24	A	60A37	1 1/8	7.52
38	60B38	9.500	B	1	2 3/8	4 1/4	1 1/4	10.84	A	60A38	1 1/8	7.84
39	60B39	9.740	B	1	2 3/8	4 1/4	1 1/4	11.36	A	60A39	1 1/8	8.28
40	60B40	9.980	B	1	2 3/8	4 1/4	1 1/4	11.50	A	60A40	1 1/8	8.56
41	60B41	10.220	B	1	2 3/8	4 1/4	1 1/4	12.14	A	60A41	1 1/8	9.10
42	60B42	10.460	B	1	2 3/8	4 1/4	1 1/4	12.74	A	60A42	1 1/8	9.84
43	60B43	10.700	B	1	2 3/8	4 1/4	1 1/4	13.00	A	60A43	1 1/8	9.74
44	60B44	10.940	B	1 1/8	2 3/8	4 1/4	1 1/4	13.88	A	60A44	1 1/8	10.76
45	60B45	11.180	B	1 1/8	2 3/8	4 1/4	1 1/4	13.98	A	60A45	1 1/8	11.08
46	60B46	11.420	B	1 1/8	2 3/8	4 1/4	1 1/4	14.60	A	60A46	1 1/8	11.50
47	60B47	11.650	B	1 1/8	2 3/8	4 1/4	1 1/4	15.00	A	60A47	1 1/8	12.32
48	60B48	11.890	B	1 1/8	2 3/8	4 1/4	1 1/4	15.82	A	60A48	1 1/8	12.42
49	60B49	12.130	B	1 1/8	2 3/8	4 1/4	1 1/4	15.90	A	60A49	1 1/8	12.92
50	60B50	12.370	B	1 1/8	2 3/8	4 1/4	1 1/4	17.66	A	60A50	1 1/8	13.98
51	60B51	12.610	B	1 1/8	2 3/8	4 1/4	1 1/4	16.98	A	60A51	1 1/8	14.58
52	60B52	12.850	B	1 1/8	2 3/8	4 1/4	1 1/4	17.93	A	60A52	1 1/8	14.60
53	60B53	13.090	B	1 1/8	2 3/8	4 1/4	1 1/4	17.99	A	60A53	1 1/8	15.84
54	60B54	13.330	B	1 1/8	2 3/8	4 1/4	1 1/4	21.60	A	60A54	1 1/8	15.92
55	60B55	13.570	B	1 1/4	2 3/8	4 1/4	1 3/8	21.14	A	60A55	1 1/4	16.96
56	60B56	13.810	B	1 1/4	2 3/8	4 1/4	1 3/8	21.88	A	60A56	1 1/4	17.60
57	60B57	14.040	B	1 1/4	2 3/8	4 1/4	1 3/8	22.26	A	60A57	1 1/4	17.62
58	60B58	14.280	B	1 1/4	2 3/8	4 1/4	1 3/8	22.80	A	60A58	1 1/4	19.00
59	60B59	14.520	B	1 1/4	2 3/8	4 1/4	1 3/8	23.86	A	60A59	1 1/4	19.20
60	60B60	14.760	B	1 1/4	2 3/8	4 1/4	1 3/8	25.22	A	60A60	1 1/4	20.02
64	60B64	15.720	B	1 1/4	2 3/8	4 1/4	1 3/8	27.40	A	60A64	1 1/4	23.00
65	60B65	15.960	B	1 1/4	2 3/8	4 1/4	1 3/8	28.92	A	60A65	1 1/4	23.24
66									A	60A66	1 1/4	24.42
68	60B68	16.670	B	1 1/4	2 3/8	4 1/4	1 3/8	30.38	A	60A68	1 1/4	25.54
70	60B70	17.150	B	1 1/4	2 3/8	4 1/4	1 3/8	31.98	A	60A70	1 1/4	27.20
72	60B72	17.630	B	1 1/4	2 3/8	4 1/4	2	34.18	A	60A72	1 1/4	28.90
76	60B76	18.580	B	1 1/4	2 3/8	4 1/4	2	38.06	A	60A76	1 1/4	32.34
80	60B80	19.540	B	1 1/4	2 3/8	4 1/4	2	41.88	A	60A80	1 1/4	45.50
84	60B84	20.490	B	1 1/4	3 3/8	4 3/8	2	46.46	A	60A84	1 1/4	40.18
90	60B90	21.930	B	1 1/4	3 3/8	5	2 1/2	63.20	A	60A90	1 1/4	43.44
96	60B96	23.360	B	1 1/4	3 3/8	5 1/2	2 1/2	63.08	A	60A96	1 1/4	52.02
112	60B112	27.180	B	1 1/4	3 3/8	5 1/2	2 1/2	81.78	A	60A112	1 1/4	70.80



TYPE A



TYPE B

Alteration Charges
See current discount sheet for alteration charges.

★ Has recessed groove in hub for chain clearance.

Maximum bores shown will accommodate standard keyseat and setscrew over keyseat. Slightly larger bores are possible with no keyseat, shallow keyseat, or setscrew at angle to keyseat.