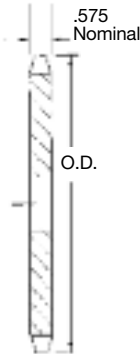


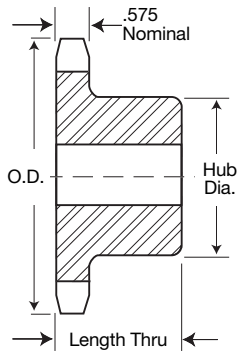


Single-Type B & C

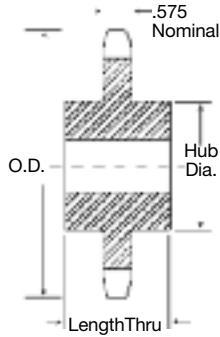
Single-Type A



TYPE A



TYPE B



TYPE C

No. Teeth	Catalog Number	Outside Diameter	Type	Bore (inches)		Hub (inches)		Weight Lbs (Approx.)	Type	Catalog Number	Stock Bore	Weight Lbs. (Approx.)
				Stock	Rec. Max.	Dia.	Length Thru					
8	80B8	3.010	B	1	1	1 1/16*	1 1/8	1.4	A	80A9	1 1/16	.8
9	80B9	3.350	B	1	1 1/16	2 1/4*	1 1/8	1.6	A	80A10	1 1/16	1.0
10	80B10	3.680	B	1	1 1/8	2 5/16*	1 1/8	2.2	A	80A11	1 1/16	1.3
11	80B11	4.010	B	1	1 1/8	2 7/16*	1 1/8	3.2	A			
12	80B12	4.330	B	1	1 1/8	3 1/16*	1 1/8	3.4	A	80A12	1 1/16	1.5
13	80B13	4.660	B	1	2	3	1 1/8	3.5	A	80A13	1 1/16	1.8
14	80B14	4.980	B	1	2 1/8	3 1/8	1 1/2	4.1	A	80A14	1 1/16	2.2
15	80B15	5.300	B	1	2 1/8	3 3/16	1 1/2	5.3	A	80A15	1 1/16	2.5
16	80B16	5.630	B	1	2 1/4	4	1 1/2	5.9	A	80A16	1 1/16	2.9
17	80B17	5.950	B	1	2 1/4	4	1 1/2	6.6	A	80A17	1 1/16	3.3
18	80B18	6.270	B	1	2 1/2	4 1/4	1 1/2	7.3	A	80A18	1 1/16	3.7
19	80B19	6.590	B	1	2 1/2	4 1/4	1 1/2	7.8	A	80A19	1 1/16	4.1
20	80B20	6.910	B	1	2 3/4	4 1/2	1 1/2	8.4	A	80A20	1 1/16	4.7
21	80B21	7.240	B	1	2 3/4	4 1/2	1 1/2	9.4	A	80A21	1 1/16	4.9
22	80B22	7.560	B	1	2 3/4	4 1/2	1 1/2	10.0	A	80A22	1 1/16	5.5
23	80B23	7.880	B	1	2 3/4	4 1/2	1 1/2	10.7	A	80A23	1 1/16	6.3
24	80B24	8.200	B	1	2 3/4	4 1/2	1 1/2	11.3	A	80A24	1 1/16	6.7
25	80B25	8.520	B	1	2 3/4	4 1/2	1 1/2	11.9	A	80A25	1 1/16	7.2
26	80B26	8.840	B	1 1/4	3 1/4	4 1/2	2	14.3	A	80A26	1 1/16	7.8
27	80B27	9.160	B	1 1/4	3 1/4	4 1/2	2	15.4	A	80A27	1 1/16	8.6
28	80B28	9.480	B	1 1/4	3 3/4	4 1/2	2	16.0	A	80A28	1 1/16	9.3
29	80B29	9.800	B	1 1/4	3 3/4	4 1/2	2	17.1	A	80A29	1 1/16	9.8
30	80B30	10.110	B	1 1/4	3 3/4	4 1/2	2	17.4	A	80A30	1 1/16	10.7
31	80B31	10.430	B	1 1/4	3 3/4	4 1/2	2	18.7	A	80A31	1 1/16	11.3
32	80B32	10.750	B	1 1/4	3 3/4	4 1/2	2	19.5	A	80A32	1 1/16	12.1
33	80B33	11.070	B	1 1/4	3 3/4	4 1/2	2	19.6	A	80A33	1 1/16	13.6
34	80B34	11.390	B	1 1/4	3 3/4	4 1/2	2	21.3	A	80A34	1 1/16	14.3
35	80B35	11.710	B	1 1/4	3 3/4	4 1/2	2	22.1	A	80A35	1 1/16	14.8
36	80B36	12.030	B	1 1/4	3 3/4	4 1/2	2	23.1	A	80A36	1 1/16	16.1
37	80B37	12.350	B	1 1/4	3 3/4	4 1/2	2	23.8	A	80A37	1 1/16	16.8
38	80B38	12.670	B	1 1/4	3 3/4	4 1/2	2	24.7	A	80A38	1 1/16	17.2
39	80B39	12.990	B	1 1/4	3 3/4	4 1/2	2	25.6	A	80A39	1 1/16	17.9
40	80B40	13.310	B	1 1/4	3 3/4	4 1/2	2	26.7	A	80A40	1 1/16	18.9
41	80B41	13.630	B	1 1/4	3 3/4	4 1/2	2	27.8	A	80A41	1 1/4	21.0
42	80B42	13.940	B	1 1/4	3 3/4	4 1/2	2	28.7	A	80A42	1 1/4	21.8
43	80B43	14.260	B	1 1/4	3 3/4	4 1/2	2	29.4	A	80A43	1 1/4	23.6
44	80B44	14.580	B	1 1/4	3 3/4	4 1/2	2	29.9	A	80A44	1 1/4	24.3
45	80B45	14.900	B	1 1/4	3 3/4	4 1/2	2	31.4	A	80A45	1 1/4	25.2
46	80B46	15.220	B	1 1/4	3 3/4	4 1/2	2	33.1	A	80A46	1 1/4	26.6
47	80B47	15.540	B	1 1/4	3 3/4	4 1/2	2	34.0	A	80A47	1 1/4	26.4
48	80B48	15.860	B	1 1/4	3 3/4	4 1/2	2	35.5	A	80A48	1 1/4	27.8
49	80B49	16.180	B	1 1/4	3 3/4	4 1/2	2	35.8	A	80A49	1 1/4	28.9
50	80B50	16.500	B	1 1/4	3 3/4	4 1/2	2	37.3	A	80A50	1 1/4	30.9
51	80B51	16.810	B	1 1/4	3 3/4	4 1/2	2	38.6	A	80A51	1 1/4	32.2
52	80B52	17.130	B	1 1/4	3 3/4	4 1/2	2	39.4	A	80A52	1 1/4	33.0
53	80B53	17.450	B	1 1/4	3 3/4	4 1/2	2	41.3	A	80A53	1 1/4	34.9
54	80B54	17.770	B	1 1/4	3 3/4	5 1/4	2	44.7	A	80A54	1 1/4	36.6
55	80B55	18.090	B	1 1/4	3 3/4	5 1/4	2	45.6	A	80A55	1 1/4	37.5
56	80B56	18.410	B	1 1/4	3 3/4	5 1/4	2	47.5	A	80A56	1 1/4	39.4
57	80B57	18.730	B	1 1/4	3 3/4	5 1/4	2	48.5	A	80A57	1 1/4	40.4
58	80B58	19.040	B	1 1/4	3 3/4	5 1/4	2	50.5	A	80A58	1 1/4	41.3
59	80B59	19.360	B	1 1/4	3 3/4	5 1/4	2	52.1	A	80A59	1 1/4	42.9
60	80B60	19.680	B	1 1/4	3 3/4	5 1/4	2	54.5	A	80A60	1 1/4	45.3
65	80B65	21.270	B	1 1/4	3 3/4	5 1/4	2	61.8	A	80A65	1 1/4	52.2
70	80C70	22.870	C	1 1/2	4 1/4	6 1/4	3 1/2	75.7	A	80A70	1 1/2	59.8
72	80C72	23.500	C	1 1/2	4 1/4	6 1/4	3 1/2	81.4	A	80A72	1 1/2	65.7
76	80C76	24.780	C	1 1/2	4 1/4	6 1/4	3 1/2	87.8	A	80A76	1 1/2	70.2
80	80C80	26.050	C	1 1/2	4 1/4	6 1/4	3 1/2	89.9	A	80A80	1 1/2	79.6
84	80C84	27.330	C	1 1/2	4 1/4	6 1/4	3 1/2	99.2	A	80A84	1 1/2	86.1
90	80C90	29.240	C	1 1/2	4 1/4	6 1/4	3 1/2	106	A	80A90	1 1/2	101
96	80C96	31.150	C	1 1/2	4 1/4	6 1/4	3 1/2	117	A	80A96	1 1/2	120
112	80C112	36.240	C	1 1/2	4 1/4	6 1/4	3 1/2	154	A	80A112	1 1/2	165

* Has recessed groove in hub for chain clearance.

Maximum bores shown will accommodate standard keyseat and setscrew over keyseat. Slightly larger bores are possible with no keyseat, shallow keyseat, or setscrew at angle to keyseat.